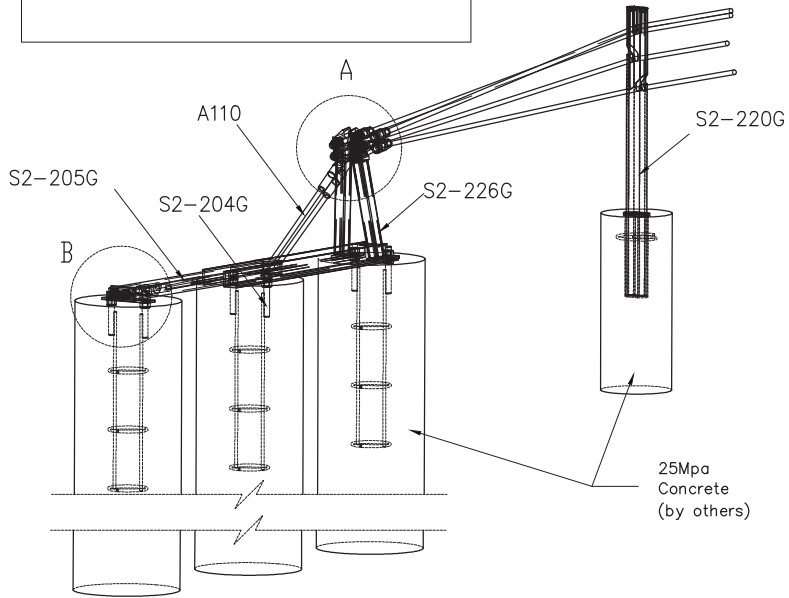
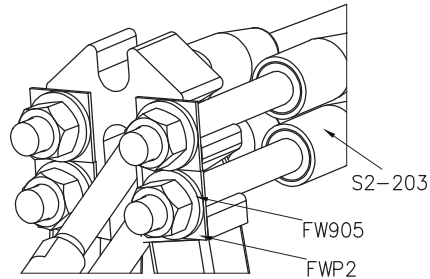


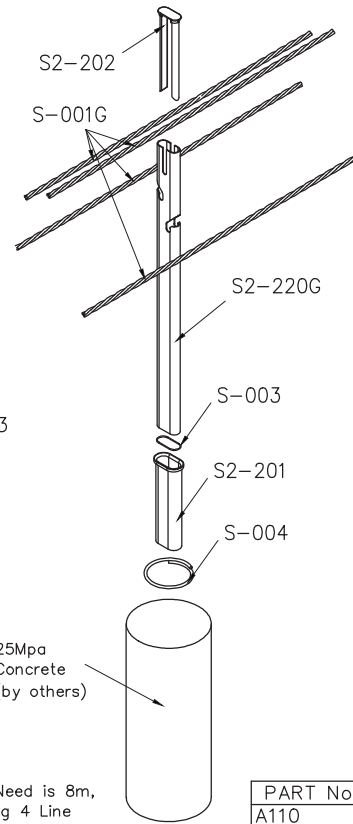
DETAIL B



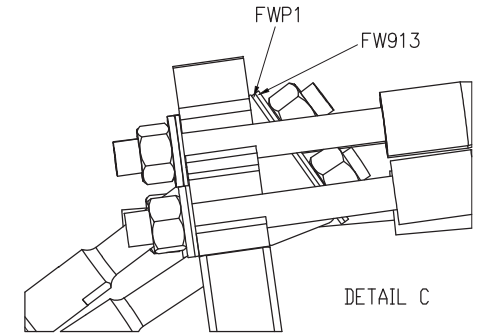
25Mpa  
Concrete  
(by others)



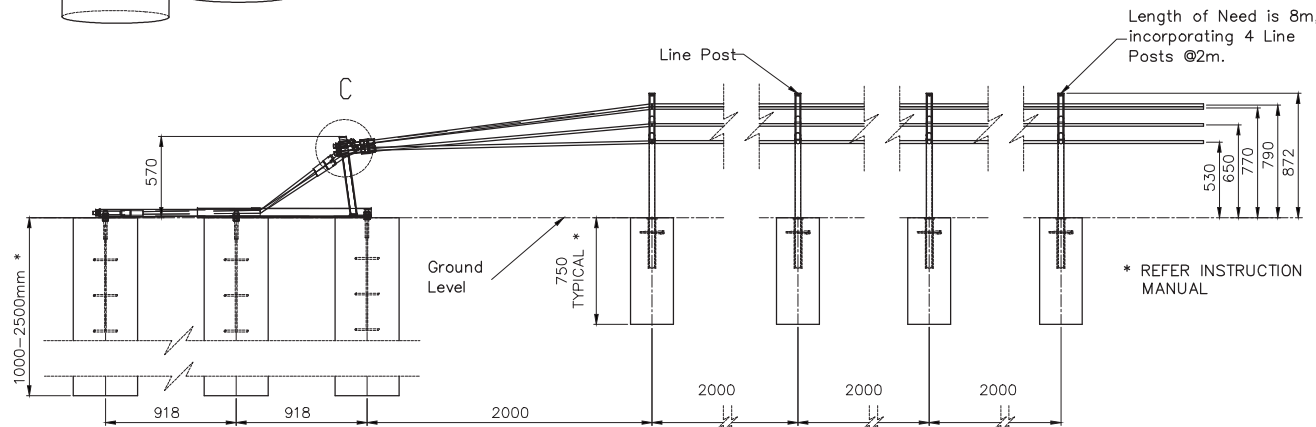
DETAIL A



25Mpa  
Concrete  
(by others)



DETAIL C



Length of Need is 8m,  
incorporating 4 Line  
Posts @2m.

\* REFER INSTRUCTION  
MANUAL

PART No.	DESCRIPTION	QTY.
A110	CABLE ANCHOR ASSEMBLY	2
FW905	CABLE ASSEMBLY WASHERS-STEEL	4
FW912	CABLE ASSEMBLY WASHERS-STEEL	1
FW913	CABLE ASSEMBLY WASHERS-STEEL	1
FWP1	CABLE ASSEMBLY WASHERS-POLYTHELENE	1
FWP2	CABLE ASSEMBLY WASHERS-POLYTHELENE	4
S-001G	19mm WIRE ROPE	AS REQ
S-003	O'RING	4
S-004	N10 x ø175 REBAR RING	4
S2-201	PLASTIC FOOTING SLEEVE	4
S2-202	WRB POST CAP- BLACK	4
S2-203	SPRING LOADED CABLE GRIPS	4
S2-204	REO CAGE C/W 4xM24 HEX NUTS	3
S2-205G	GROUND STRUT ASSEMBLY	1
S2-220G	SENTRYLINE II POST COLOUR TBA	4
S2-226G	TRIGGER POST	1



Australian Construction Products Pty Ltd  
339 Horsley Road Milperra NSW 2214  
P.O. Box 342 Panania NSW 2213  
Tel: +61 2 9772 4172 Fax: +61 2 9792 6272

TOLERANCES

Whole Numbers ±2  
One Decimal Place :±0.05  
Bend Angle : ±2  
Straightness : 1.5per1500

Scale: N.T.S.

CLIENT

MATERIAL  
STEEL TO AS/NZS 1594

FINISH

PRETREATMENT TO AS 1627  
HOT DIP GALVANISE TO AS/NZS 4680

ITEM SENTRYLINE II TERMINAL END

DRAWING NUMBER

**GAS2-ANCH TL3/4**

DRAWN E.A.	CHECKED I.B.	APPROVED
---------------	-----------------	----------

REV	DESCRIPTION	APPD	DATE
A	ORIGINAL ISSUE	Z.P.	05.01.11