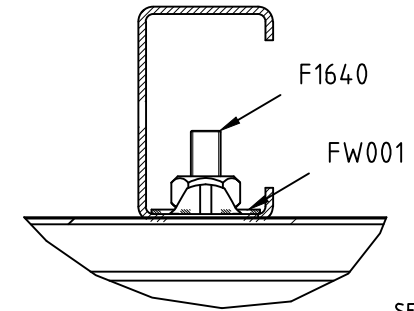
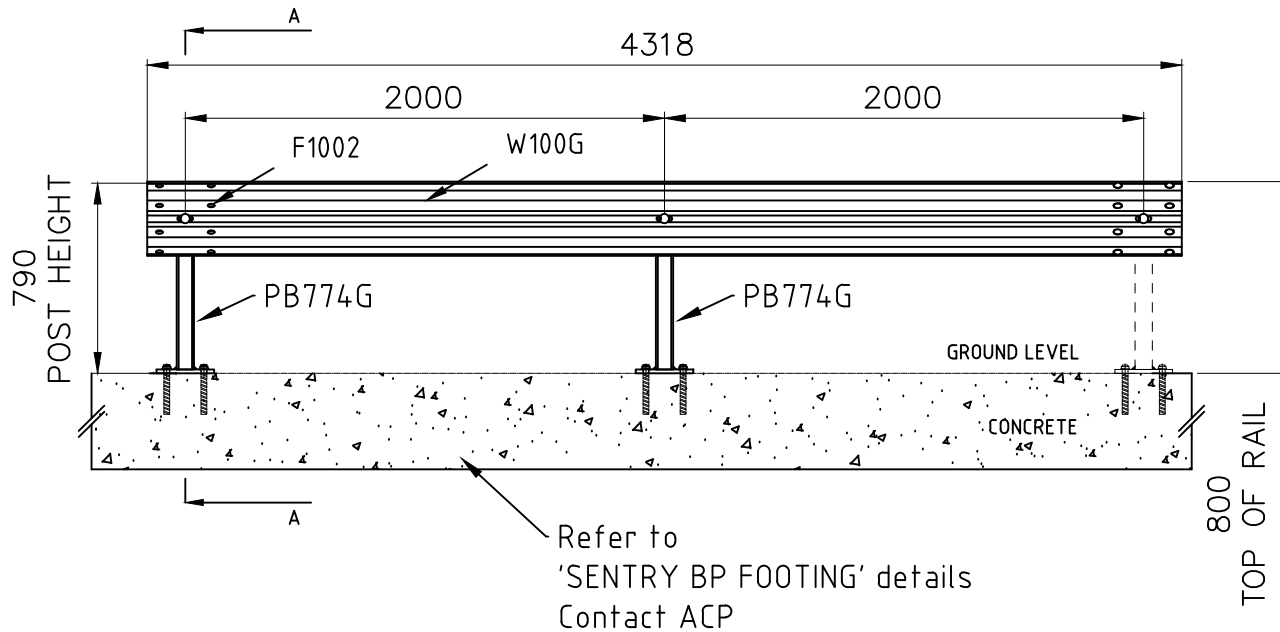
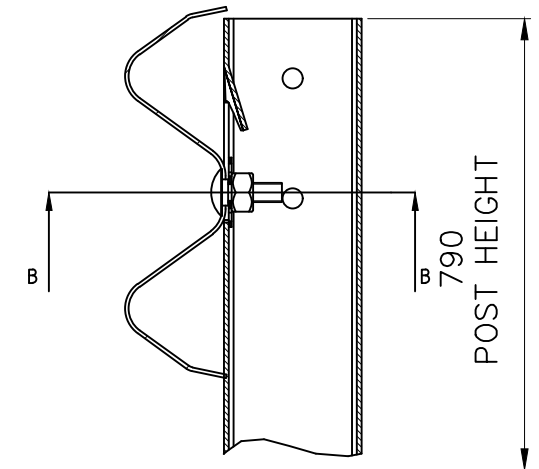


INDEX	PART/DRAWING	DESCRIPTION	QTY
1	PB774G	ACP SENTRY POST ON 16MM BASE PLATE	2
2	FW001	ACP SENTRY WASHER	2
3	F1002	M16x32 SPLICE BOLT AND NUT FOR RAIL CONNECTION	8
4	F1640	M16x40 POST BOLT AND OVERSIZED NUT	2
5	W100G	4.0M STANDARD W-BEAM	1



SECTION B-B



SECTION A-A



Australian Construction Products Pty Ltd
 339 Horsley Road Milperra NSW 2214
 P.O. Box 565 Panania NSW 2213
 Tel: +61 2 9772 4172 Fax: +61 2 9792 6272

TOLERANCES

Whole Numbers ± 2
 One Decimal Place ± 0.05
 Bend Angle : ± 2
 Straightness : $1.5\text{per}1500$

Scale: N.T.S.

CLIENT

MATERIAL
 STEEL TO AS/NZS 1594

FINISH
 PRETREATMENT TO AS 1627
 HOT DIP GALVANISE TO AS/NZS 4680

ITEM
 ACP SENTRY BARRIER W BEAM SYSTEM
 ON BASEPLATE ARRANGEMENT

DRAWING NUMBER
GA087BP

DRAWN W.R.	CHECKED E.A.	APPROVED
---------------	-----------------	----------

REV	DESCRIPTION	APPD	DATE
A	ORIGINAL ISSUE	W.R.	20.07.22