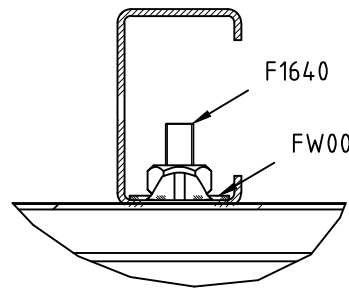
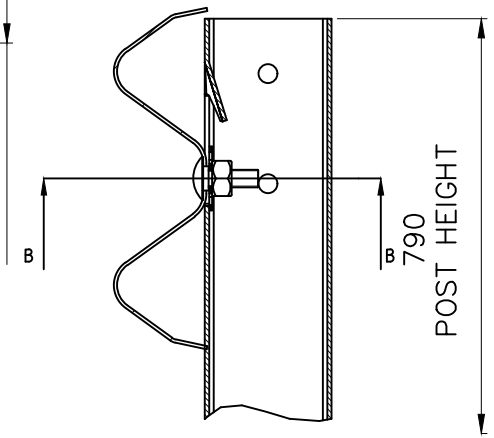
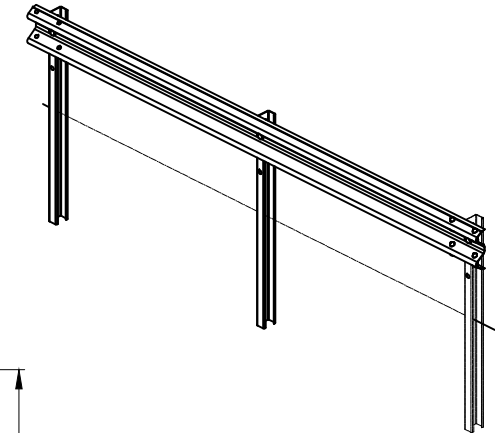
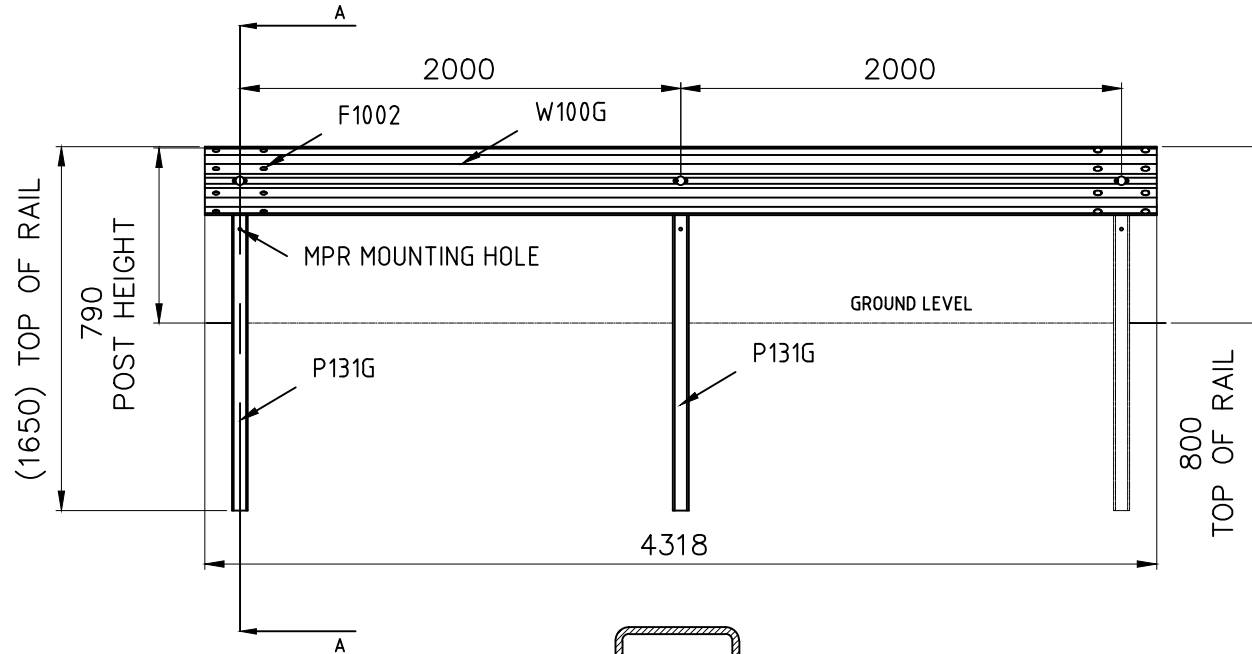


INDEX	PART/DRAWING	DESCRIPTION	QTY
1	P131G	ACP SENTRY BARRIER POST	2
2	FW001	ACP SENTRY WASHER	2
3	F1002	M16x32 SPLICE BOLT AND NUT FOR RAIL CONNECTION	8
4	F1640	M16x40 POST BOLT AND OVERSIZED NUT	2
5	W100G	4.0M STANDARD W-BEAM	1



SECTION B-B

SECTION A-A

REV	DESCRIPTION	APPD	DATE
B	P1641G REPLACED WITH P131G	E.A.	14.04.22
A	ORIGINAL ISSUE	E.A.	12.04.16



Australian Construction Products Pty Ltd
339 Horsley Road Milperra NSW 2214
P.O. Box 565 Panania NSW 2213
Tel: +61 2 9772 4172 Fax: +61 2 9792 6272
A member of the Fletcher Building Group

TOLERANCES
Whole Numbers ± 2
One Decimal Place ± 0.05
Bend Angle : ± 2
Straightness : $1.5 \text{ per } 1500$
Scale: N.T.S.

CLIENT
MATERIAL
STEEL TO AS/NZS 1594
FINISH
PRETREATMENT TO AS 1627
HOT DIP GALVANISE TO AS/NZS 4680

ITEM		
ACP SENTRY BARRIER W BEAM SYSTEM		
DRAWING NUMBER		
GA087		
DRAWN	CHECKED	APPROVED
E.A.		